


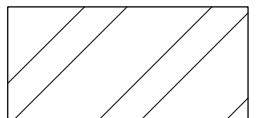
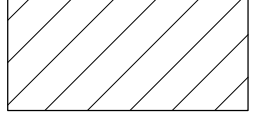
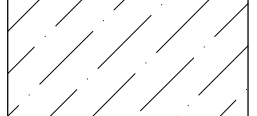

SWORN AND SUBSCRIBE BEFORE ME THIS ____ DAY OF _____, 20__.

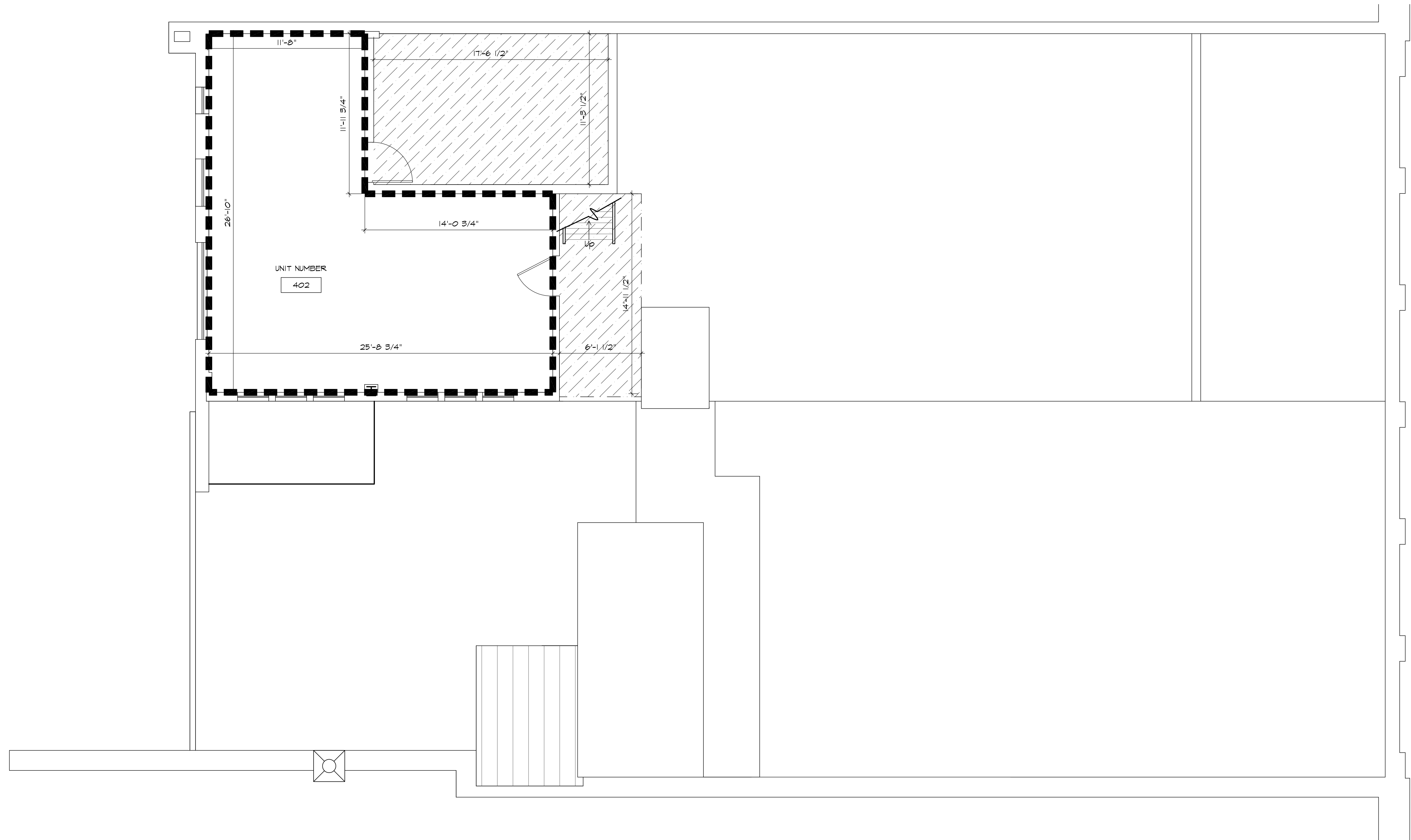
NOTARY: _____

MY COMMISSION EXPIRES: _____

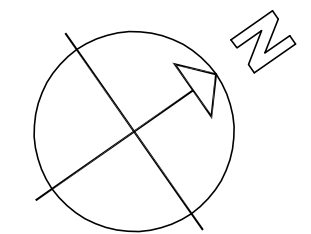
THIS IS TO CERTIFY THAT TO THE BEST OF MY KNOWLEDGE AND EXPERIENCE BASED ON THE FIELD OBSERVATIONS AND EXISTING DOCUMENTS, THAT THESE DRAWINGS FULLY AND ACCURATELY REPRESENT AND DEPICT THE LAYOUT, LOCATION, CEILING, AND FLOOR ELEVATIONS, UNIT NUMBERS, AND DIMENSIONS OF THE UNITS, AS BUILT, AND CONTAIN ALL OF THE INFORMATION REQUIRED BY SECTION 47-C-2-109 OF THE NC GENERAL STATUTES.

LEGEND

-  COMMON ELEMENT
-  LIMITED COMMON COMMERCIAL ELEMENT
-  LIMITED COMMON RESIDENTIAL ELEMENT
-  LIMITED COMMON UNIT 402 ELEMENT
-  UNIT BOUNDARY



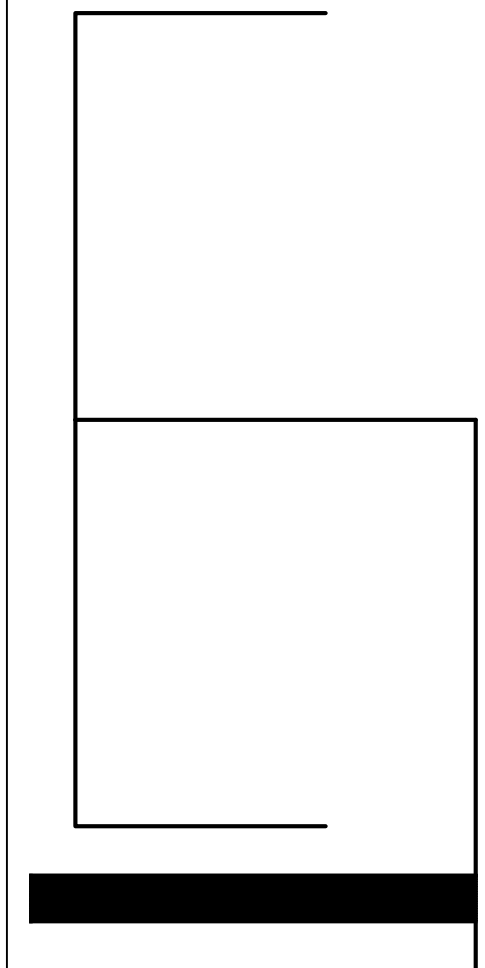
FIFTH FLOOR PLAN



BALDWIN LOFTS CONDOMINIUM
107-109 W. MAIN STREET
DURHAM, NC

SHEET 7 OF 11

CONDOMINIUM PLAT FOR:
Baldwin Lofts Condominium
107-109 W. Main Street
Durham, NC



MAURER ARCHITECTURE
119 E. HARGETT ST. SUITE 300, RALEIGH, NC 27601
TEL. 919-829-4969 FAX. 919-829-0860

DATE	12-22-10
DR.	MJF
CH.	DSM
PROJ. #	10063.1
REVISIONS	DATE

FIFTH FLOOR PLAN

A1.5